

all services can be accessed
through AWP's 24-hour Hotline

1.800.220.8116

The Gateway to AWP

A Woman's Place (AWP)
is a community organization
dedicated to ending
domestic abuse and violence,
a community issue requiring
community effort and support
to successfully eradicate.

Join the community effort
to end domestic violence!

Volunteer!

AWP offers a variety of volunteer
opportunities, with trainings
held throughout the year.

Call 215.343.9241
for more information.

**Free, Private, and Confidential
24-hour hotline**

1.800.220.8116

Administrative Office

215.343.9241

Full Circle

215.340.0120

www.awomansplace.org



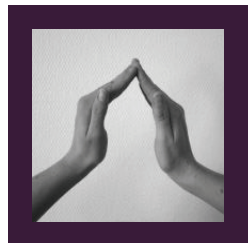
A Woman's Place

a community organization
a community issue



**Free, Private,
and Confidential**

**Shelter, Service,
and Support**



**Advocacy,
Training,
Outreach,
and Education**



*the only domestic violence agency
in Bucks County, Pa.*

**A Woman's Place
provides**

**Free,
Private,
and
Confidential**

**Shelter
Service
Support
Advocacy
Training
Outreach
and
Education**

**to Victims of
Domestic Abuse and Violence
and their Children**

and the Community.



Shelter AWP provides a safe place for victims of domestic abuse and violence and their children. Beyond safe shelter, residents have access to all of AWP's services.

Counseling Individual and group counseling, for adults and children, is available at locations throughout Bucks County.

Legal Project The Legal Advocacy Program provides victims of domestic abuse and violence with legal options and safety planning counseling, assistance in filing Protection from Abuse Orders (PFAs), and court accompaniment.



Members of the First Response Team provide 24-hour, in-person crisis counseling, safety planning, information, and referrals to victims immediately following an incident of domestic violence.

The Legal Assistance Program provides civil legal representation for AWP clients.



Medical Project Training is provided for healthcare workers and staffs at all area hospitals and area clinics in screening patients for domestic abuse and violence.

Patients can access AWP's 24-hour counseling services from the safety of the hospital or healthcare clinic.



School-Based Education Project Programs at elementary, middle, and high schools throughout Bucks County provide students with information and skills for healthy relationships as well

as raise awareness about resources and options available to students experiencing abuse and violence in their relationships.

Community Education Project Community-based initiatives and presentations provide ongoing domestic abuse and violence awareness and prevention education while engaging more of the community in efforts to end domestic violence.



The Men's Initiative engages men in the community, while the Faith Initiative engages faith communities, in awareness and prevention efforts and activities through outreach, education, training, and advocacy.

Ongoing domestic abuse and violence awareness and education presentations are given throughout the community to a variety of audiences.



Full Circle Much more than a thrift store, Full Circle is located in the Towne Center Shopping Center in New Britain, Pa. All proceeds from the benefit AWP. Donations are accepted at this location.